



Countless Patterns • 6 Colorways

PATTERNWORKS ✨ SUREFIT NOW AVAILABLE WITH QUICKSHIP LEAD TIMES!

How it works...

- ✨ Client selects patterns from any Durkan Print Catalog.
- ✨ Rep helps client select and color patterns using one of the 6 QuickShip Plus colorways.
- ✨ Order paper S/O's using QSP base grade and QSP colorway. Get client approval on papers.
- ✨ One carpet strikeoff (S/O) that represents all the colors in your palette from one QSP colorway will be permitted, but will not be matched to for production.
- ✨ All production orders will match to the in house master strikeoff for that colorway (see master chainset).
- ✨ Client approves PatternWorks Express or full PatternWorks package.
- ✨ Order is placed.
- ✨ Waste may occur due to various widths required on the project. Whenever possible, any potential waste will be used for bleed-out, cove base material, transition strips, etc.,

✓ 4 Base Options Available

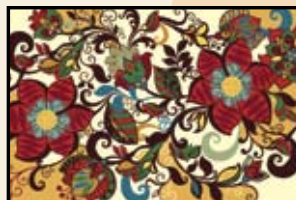
- QSP 32 - 12' wide only
- QSP Cut 40 - 12' wide only
- QSP 36 - 12' & 15'
- QSTEX 36 - 12' & 15'

Requirements

- Minimum per line item = 40 SY
- Maximum yardage per project = 1500 SY
- For larger yardage, please see your local sales rep.

Pricing and Options

Please see your local sales rep.
Lead times vary, please contact your local sales rep.





QUICKSHIP PLUS

QuickShip Plus includes the six colorways shown below

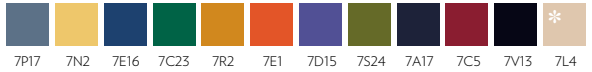
QSP-1

RADIUS



QSP-2

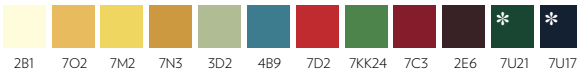
MARQUESAS



* This particular rug does not use color 7L4.

QSP-3

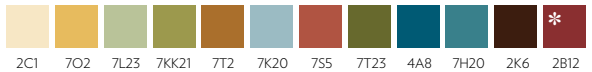
CHROMISTIQUE



* This particular rug does not use color 7U21 or 7U17.

QSP-4

MARQUESAS



* This particular rug does not use color 2B12.

QSP-5

CHROMISTIQUE



* This particular rug does not use color 7KK1 or 7V5.

QSP-6

RADIUS

